

MONTHLY MEMBERSHIP PROGRESS REPORT

LOCATION NEPAL

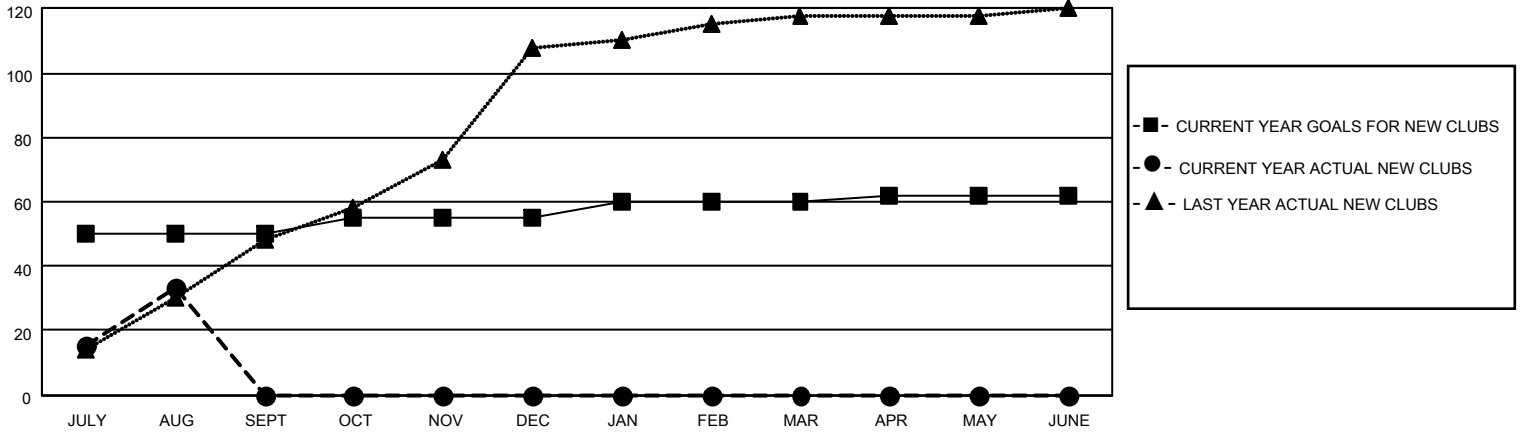
District 325B1

Results as of: 8/31/2020

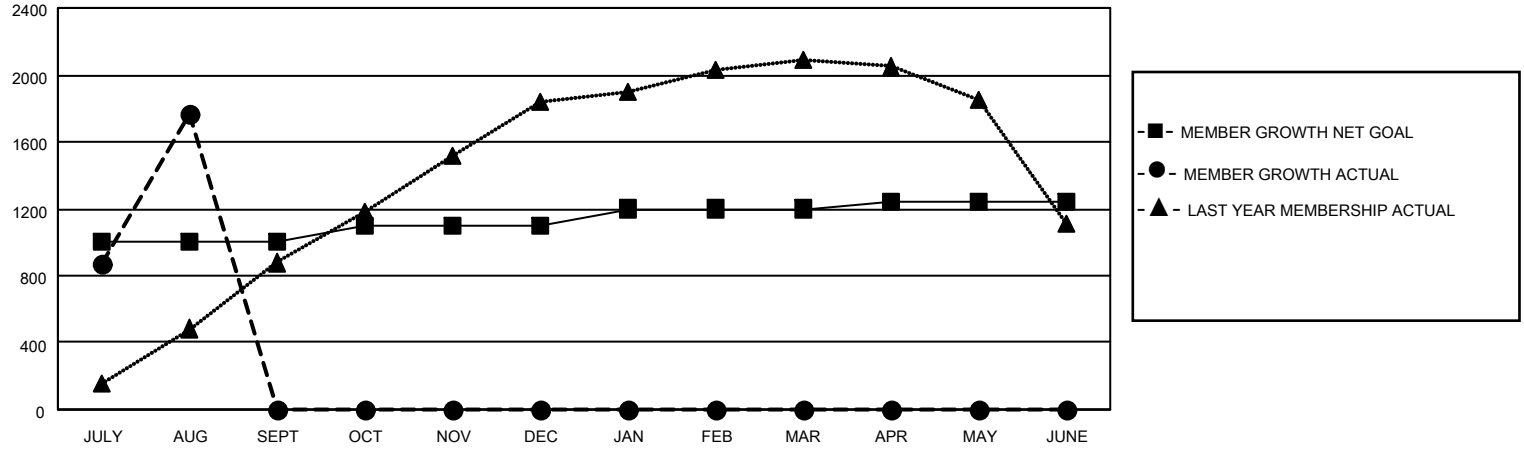
Clubs			
RESULTS FOR 2020-2021			
QUARTER	NEW CLUB GOAL	NEW CLUBS	DROPPED CLUBS
JULY/AUG/SEPT	50	33	1
OCT/NOV/DEC	5	0	0
JAN/FEB/MAR	5	0	0
APR/MAY/JUNE	2	0	0

Members			
RESULTS FOR 2020-2021			
QUARTER	MEMBER GROWTH NET GOAL	MEMBER GROWTH ACTUAL	DROPPED MEMBERS ACTUAL (including transfers)
JULY/AUG/SEPT	1000	1968	169
OCT/NOV/DEC	100	0	0
JAN/FEB/MAR	100	0	0
APR/MAY/JUNE	40	0	0

GOALS AND ACTUAL NEW CLUBS CUMULATIVE



GOALS AND ACTUAL MEMBERS CUMULATIVE



DROPPED CLUBS: 1	
DROPPED MEMBERS	
DECEASED	0
CLUB CANCELLED	0
OTHER	169
TOTAL	169

240 CLUBS OF 512 ADDED 1 OR MORE NEW MEMBERS

[CLICK HERE FOR CUMULATIVE MEMBERSHIP DATA](#)

<u>GENDER DISTRIBUTION</u>	
MALE	10,004 (73.75%)
FEMALE	3,561 (26.25%)

TOTAL FAMILY UNIT MEMBERS	9,801
FAMILY MEMBERS PAYING HALF DUES	6,381